



2024

TrailLink Unlimited



Guides



**Parke  
Community  
Rail Trail**  
*Indiana*



## Parke Community Rail Trail

Indiana

*The Rosedale South Trail offers a paved, tree-lined route along the former Pennsylvania Railroad in the western Indiana community*



The Rosedale South Trail offers a paved, tree-lined route along the former Pennsylvania Railroad in the western Indiana community of Rosedale. It begins on the Central Street and travels southwest for just over a half mile.

When it opened in October 2014, it was the first segment of a larger 26-mile network of connecting rail-trails called the Covered Bridge Gateway Trail.



# Parke Community Rail Trail

*Indiana*

**States:** Indiana

**Counties:** Parke

Length: 0.6miles

**Trail end points:** Central St. just west of West St. to West of Coxville Rd.

**Trail surfaces:** Asphalt

**Trail category:** Rail-Trail

**Trail activities:** Bike, Inline Skating, Wheelchair Accessible, Walking

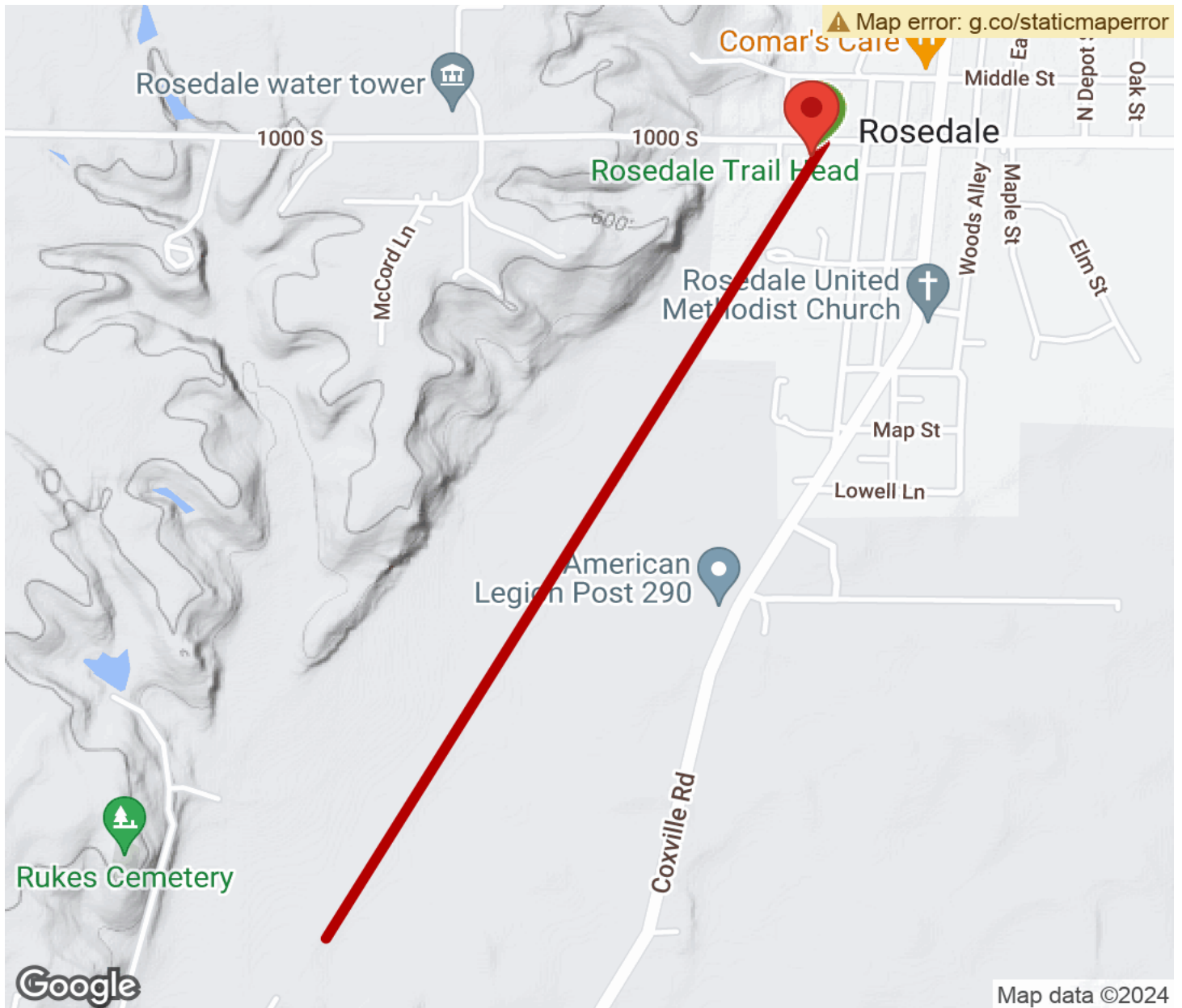
## Parking & Trail Access

Parking is available at the trailhead on Central Street (see map for details).



# Parke Community Rail Trail

Indiana



Trailhead



Restroom



Parking



Water Fountain



Tunnel



**TrailLink**  
by Rails-to-Trails Conservancy

**TrailLink.com**