



2024

TrailLink Unlimited



Guides



**Montezuma
Spur Recpath**
Colorado



Montezuma Spur Recpath

Colorado

The Montezuma Spur Recpath is a short trail along Montezuma Road near Keystone, Colorado, home to the popular Keystone



The Montezuma Spur Recpath is a short trail along Montezuma Road near Keystone, Colorado, home to the popular Keystone Resort. From the path's western end, trail users can take the [Snake River Recpath](#) to reach the resort and shopping centers in downtown Keystone.

While the trail primarily serves to connect residents of neighborhoods along Montezuma Road to Keystone, it also acts as a safer alternative to Montezuma Road for cyclists traveling part of the journey to Montezuma itself. The former mining camp has few permanent residents but retains many historic structures, including a schoolhouse constructed in 1884.



Montezuma Spur Recpath

Colorado

States: Colorado

Counties: Summit

Length: 0.7miles

Trail end points: Snake River Recpath at Montezuma Rd. and Ida Belle Dr. to Montezuma Rd. and Independence Rd.

Trail surfaces: Asphalt

Trail category: Greenway/Non-RT

Trail activities: Bike,Inline

Skating, Wheelchair Accessible, Walking, Cross Country Skiing

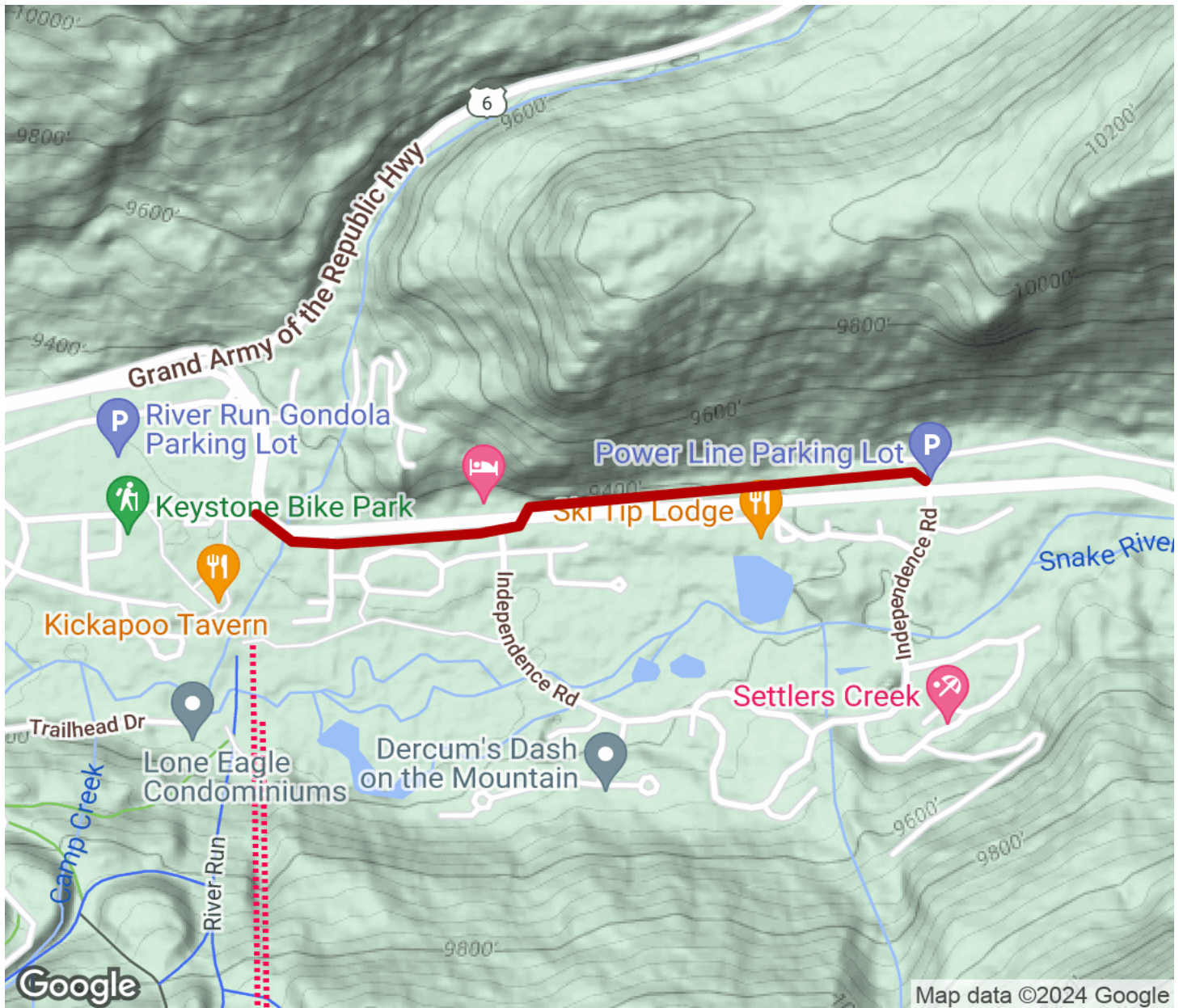
Parking & Trail Access

There are no official parking areas for the Montezuma Spur Recpath, but parking may be found on-street in downtown Keystone.



Montezuma Spur Recpath

Colorado



Trailhead



Restroom



Parking



Water Fountain



Tunnel



TrailLink
by Rails-to-Trails Conservancy

TrailLink.com