



2024

TrailLink Unlimited



Guides



## Blairsville Riverfront Trail

*Pennsylvania*



## Blairsville Riverfront Trail

Pennsylvania

*The Blairsville Riverfront Trail is a scenic woodland trail located along the Conemaugh River. The property the trail was built on is*



The Blairsville Riverfront Trail is a scenic woodland trail located along the Conemaugh River. The property the trail was built on is owned by the U.S. Army Corps of Engineers, who maintain a flood-control dam some several miles downstream. Because of the periodic flooding, the trail is made up of a durable tar-and-chip trail surface. Thus trail users should not enter the property during periods of high water. In addition to walking, running and cycling; the surrounding property is open to hunting. Trail users should exercise caution when using the trail during hunting seasons and should wear something visible. The trail is also part of an overall community revitalization effort and many historic buildings can still be seen. Restaurants, coffee shop and other stores are all a short distance from the path.



# Blairsville Riverfront Trail

*Pennsylvania*

**States:** Pennsylvania

**Counties:** Indiana

Length: 1.7miles

**Trail end points:** Wyotech Park to West Market Street

**Trail surfaces:** Asphalt

**Trail category:** Greenway/Non-RT

**Trail activities:** Bike, Fishing, Wheelchair Accessible, Mountain Biking, Walking

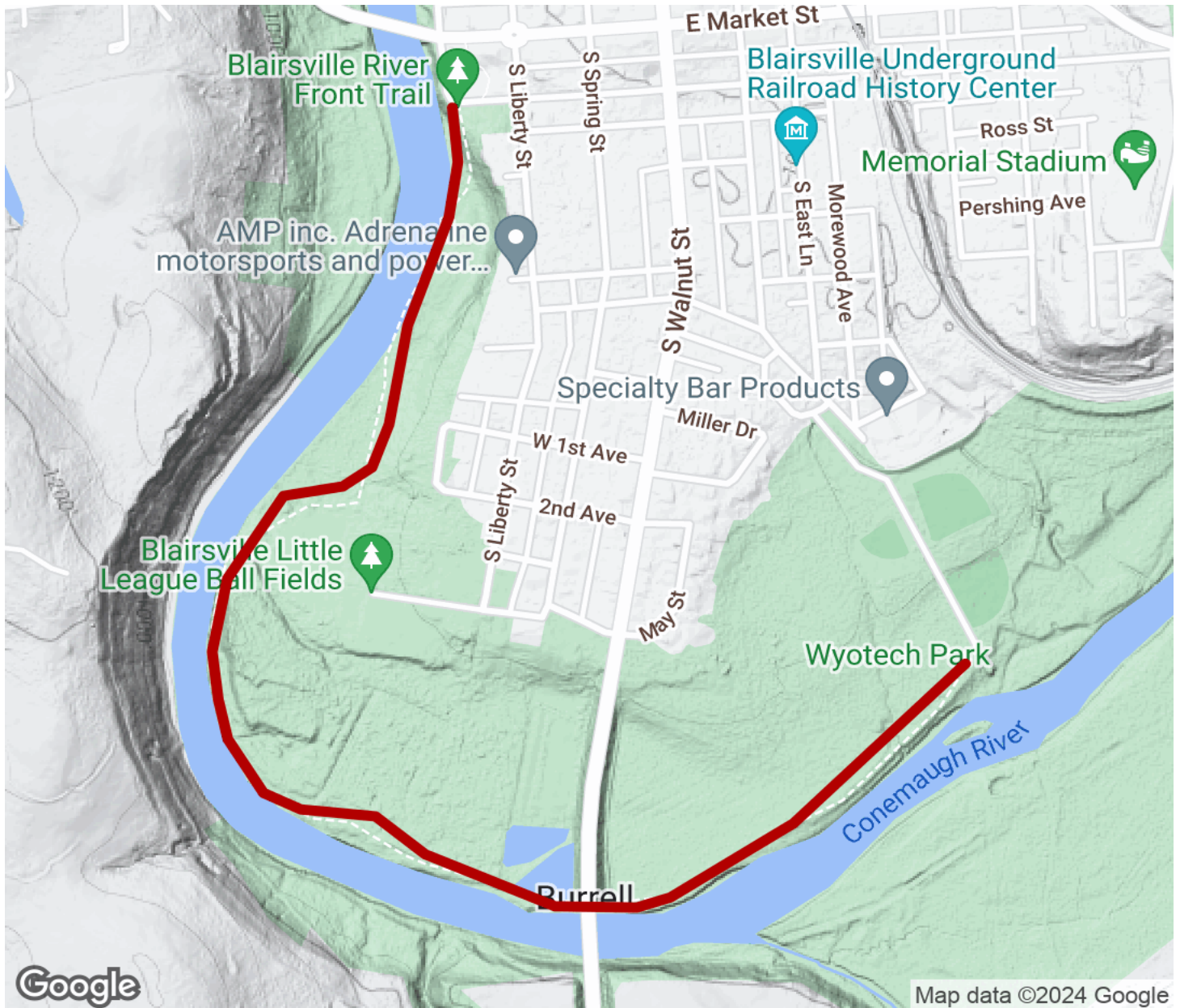
## Parking & Trail Access

The trail is easily located and accessed on the intersection of West Market Street and South Water Street before the bridge.



# Blairsville Riverfront Trail

Pennsylvania



Trailhead



Restroom



Parking



Water Fountain



Tunnel



**TrailLink**  
by Rails-to-Trails Conservancy

**TrailLink.com**