



2024

TrailLink Unlimited



Guides



Al Tahoe Bike Trail

California



Al Tahoe Bike Trail

California

The Al Tahoe Bike Trail is a paved sidepath along Al Tahoe Boulevard in the scenic resort community of South Lake Tahoe,



The Al Tahoe Bike Trail is a paved sidepath along Al Tahoe Boulevard in the scenic resort community of South Lake Tahoe, California. The trail runs between the road and dense pine forest for its entire route.

The path twice connects to the [Lake Tahoe Community College Bike Path](#), which winds through the school's wooded campus. Across from College Way, the trail also passes the main gate for Bijou Community Park. Enter the park to take advantage of its many amenities, including a skate park, fitness course, dog park and disc golf course.



Al Tahoe Bike Trail

California

States: California

Counties: El Dorado

Length: 1.1miles

Trail end points: Al Tahoe Blvd. and College Ave. to Al Tahoe Blvd. and Pioneer Trail

Trail surfaces: Asphalt

Trail category: Greenway/Non-RT

Trail activities: Bike, Inline Skating, Wheelchair Accessible, Walking

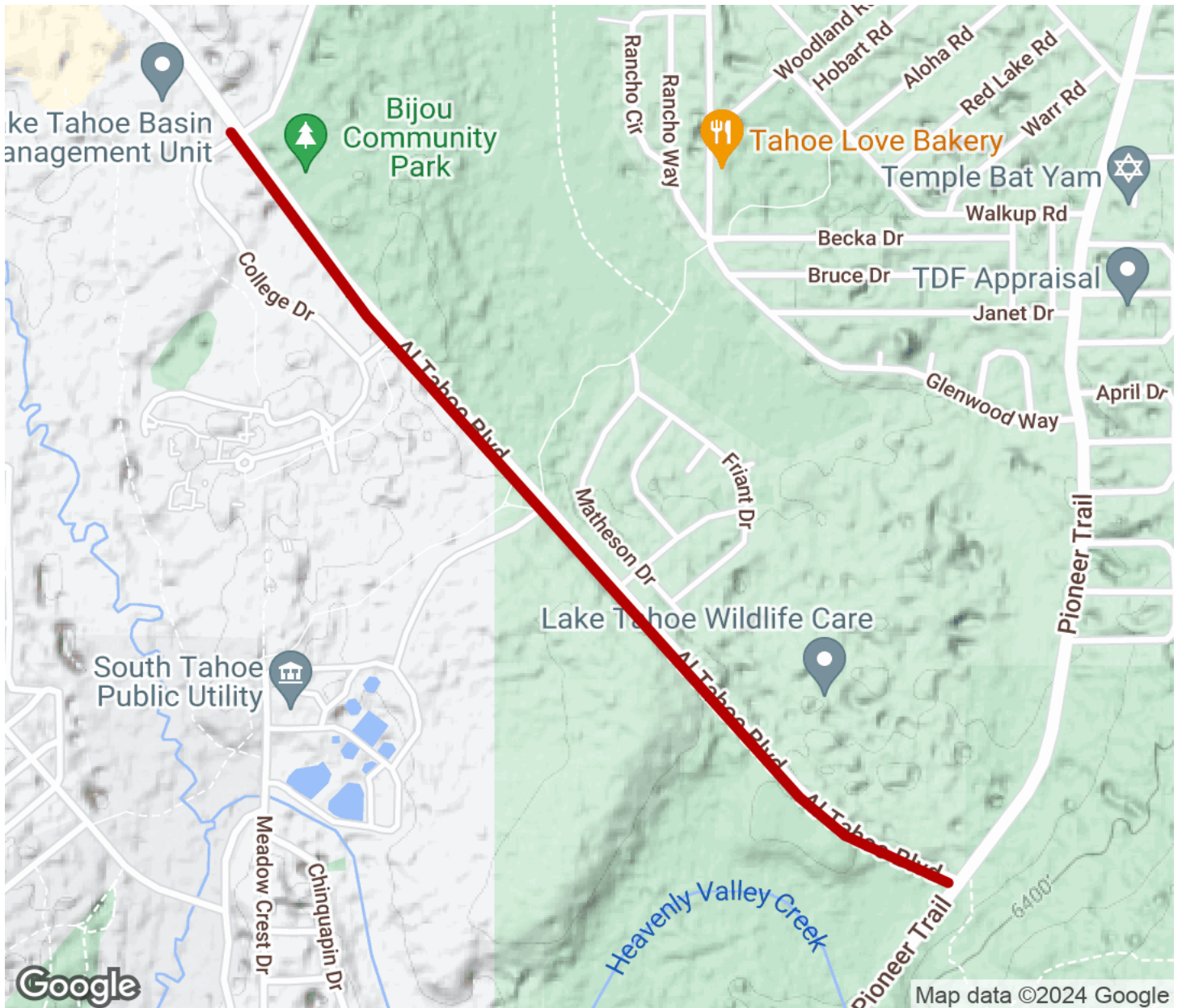
Parking & Trail Access

Parking for the Al Tahoe Bike Trail is available in Bijou Community Park (1099 Al Tahoe Boulevard).



Al Tahoe Bike Trail

California



Trailhead



Restroom



Parking



Water Fountain



Tunnel



TrailLink
by Rails-to-Trails Conservancy

[TrailLink.com](https://www.TrailLink.com)