



2024

TrailLink Unlimited



Guides



**Big Sky Park
Trail**
Oregon



Big Sky Park Trail

Oregon

On the east end of Bend, a short trail winds along Big Sky Park and Sports Complex. The natural-surface trail runs through an open



On the east end of Bend, a short trail winds along Big Sky Park and Sports Complex. The natural-surface trail runs through an open area and has plentiful nearby amenities, including parking, portable toilets, drinking fountains, picnic shelters, athletic facilities, a playground, and a large off-leash dog park.



Big Sky Park Trail

Oregon

States: Oregon

Counties: Deschutes

Length: 0.9miles

Trail end points: Neff Rd. to South of Eastmont
Dr.

Trail surfaces: Dirt,Gravel

Trail category: Greenway/Non-RT

Trail activities: Mountain Biking,Walking

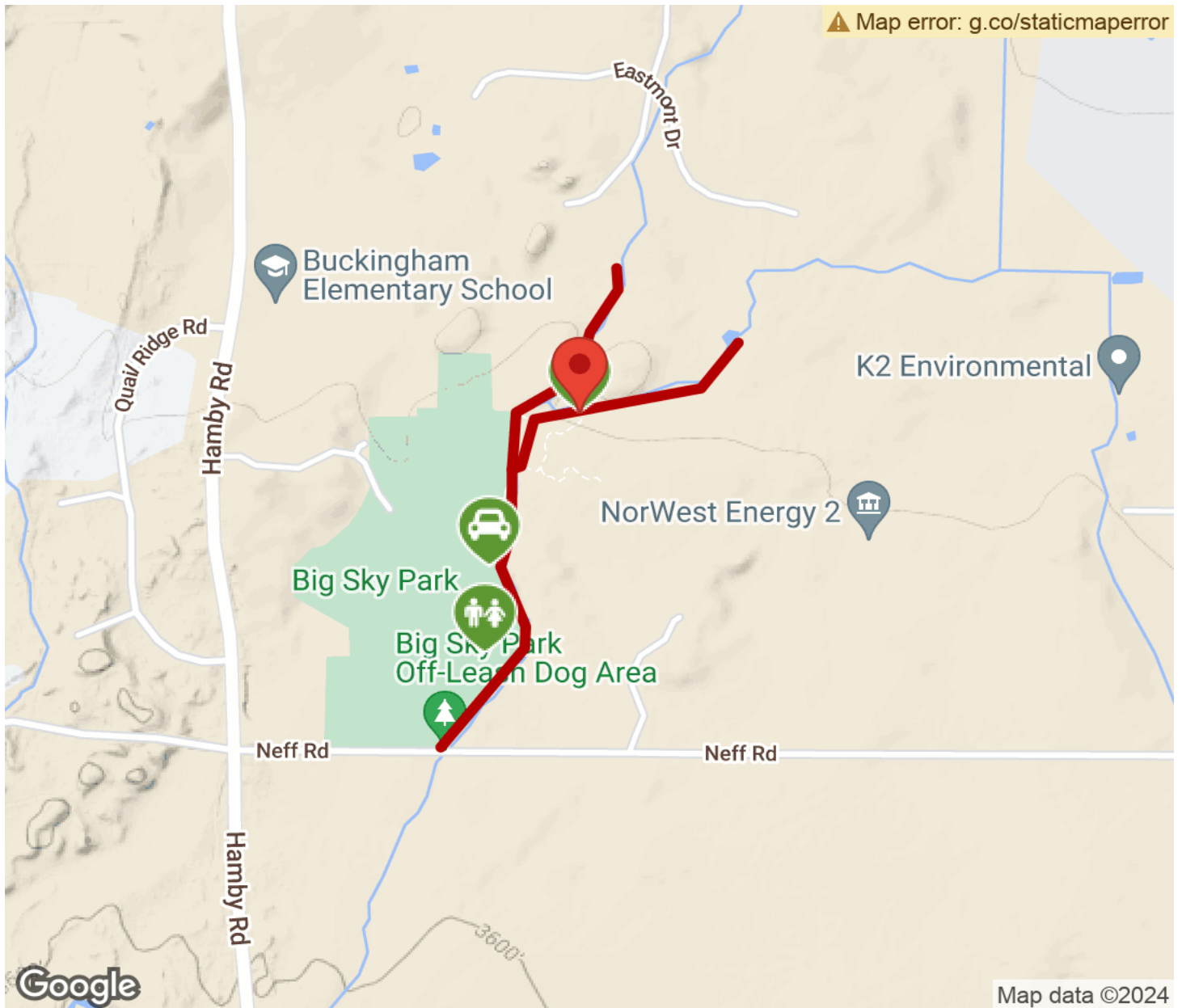
Parking & Trail Access

Parking is plentiful in Big Sky Park (21690 NE Neff Road).



Big Sky Park Trail

Oregon



Trailhead



Restroom



Parking



Water Fountain



Tunnel



TrailLink
by Rails-to-Trails Conservancy

TrailLink.com