



2024

TrailLink Unlimited



Guides



Clover Creek Preserve Trail

California



Clover Creek Preserve Trail *California*

Paved trails on either side of Clover Creek combine with a loop around a retention pond to form a larger trail loop through Clover



Paved trails on either side of Clover Creek combine with a loop around a retention pond to form a larger trail loop through Clover Creek Preserve in Redding. The scenic area offers views of the trickling creek and surrounding mountains, while providing a peaceful respite from the adjacent housing developments.

In addition to the paved multiuse loop, dirt jogging and hiking trails course throughout Clover Creek Preserve.



Clover Creek Preserve Trail

California

States: California

Counties: Shasta

Length: 2miles

Trail end points: Saturn Skyway and Shasta View Dr. to Preserve Blvd. and Thomason Tr.

Trail surfaces: Asphalt

Trail category: Greenway/Non-RT

Trail activities: Bike,Inline Skating,Wheelchair Accessible,Walking

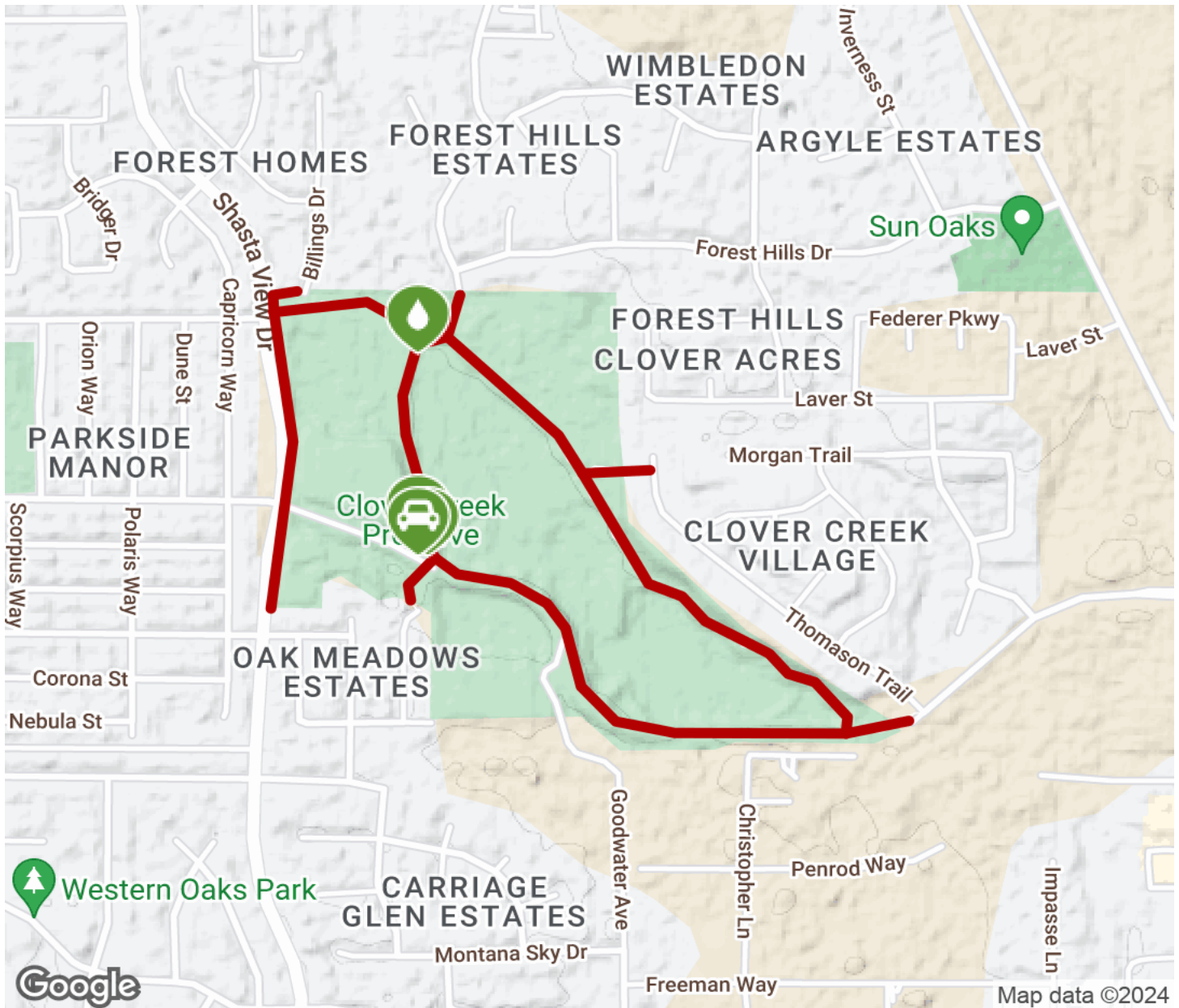
Parking & Trail Access

Parking for Clover Creek Preserve is available off Shasta View Drive (across from Venus Way) in Redding.



Clover Creek Preserve Trail

California



Trailhead



Restroom



Parking



Water Fountain



Tunnel



TrailLink
by Rails-to-Trails Conservancy

TrailLink.com