



2024

TrailLink Unlimited



Guides



**Grayling  
Bicycle  
Turnpike**  
*Michigan*



## Grayling Bicycle Turnpike

Michigan

*Located in Grayling, Michigan, the Grayling Bicycle Turnpike runs from the north side of the Grayling downtown area at North Down*



completed in 2017, takes users across I-75. Exercise caution when entering the newly constructed bridge as motorized vehicles entering I-75 cross paths with trail users.

Located in Grayling, Michigan, the Grayling Bicycle Turnpike runs from the north side of the Grayling downtown area at North Down River Road all the way out to the entrance of Hartwick Pines State Park, a distance of approximately 6.5 miles. The trail—also known as the Wayne C. Koppa Trail after the chairman of the Crawford County Multi-Purpose Pathway Committee—is paved with asphalt, with the exception of the Michigan Department of Natural Resources' heavy equipment gravel driveway (about 50 feet).

The trail is mostly flat between downtown Grayling and Grayling High School, while several small hills may prove a challenge on the stretch from the school to Hartwick Pines State Park. This section runs through pine forest but is never far away from State Route 93. A bike-ped bridge,



# Grayling Bicycle Turnpike

*Michigan*

**States:** Michigan

**Counties:** Crawford

Length: 6.5miles

**Trail end points:** W. North Down River Rd. and  
McClellan St./SR 93 (Grayling) to Hartwick  
Pines State Park at State Park Dr. and Hartwick  
Pines Dr./SR 93

**Trail surfaces:** Asphalt,Gravel

**Trail category:** Greenway/Non-RT

**Trail activities:** Bike,Inline

Skating,Wheelchair Accessible,Walking,Cross

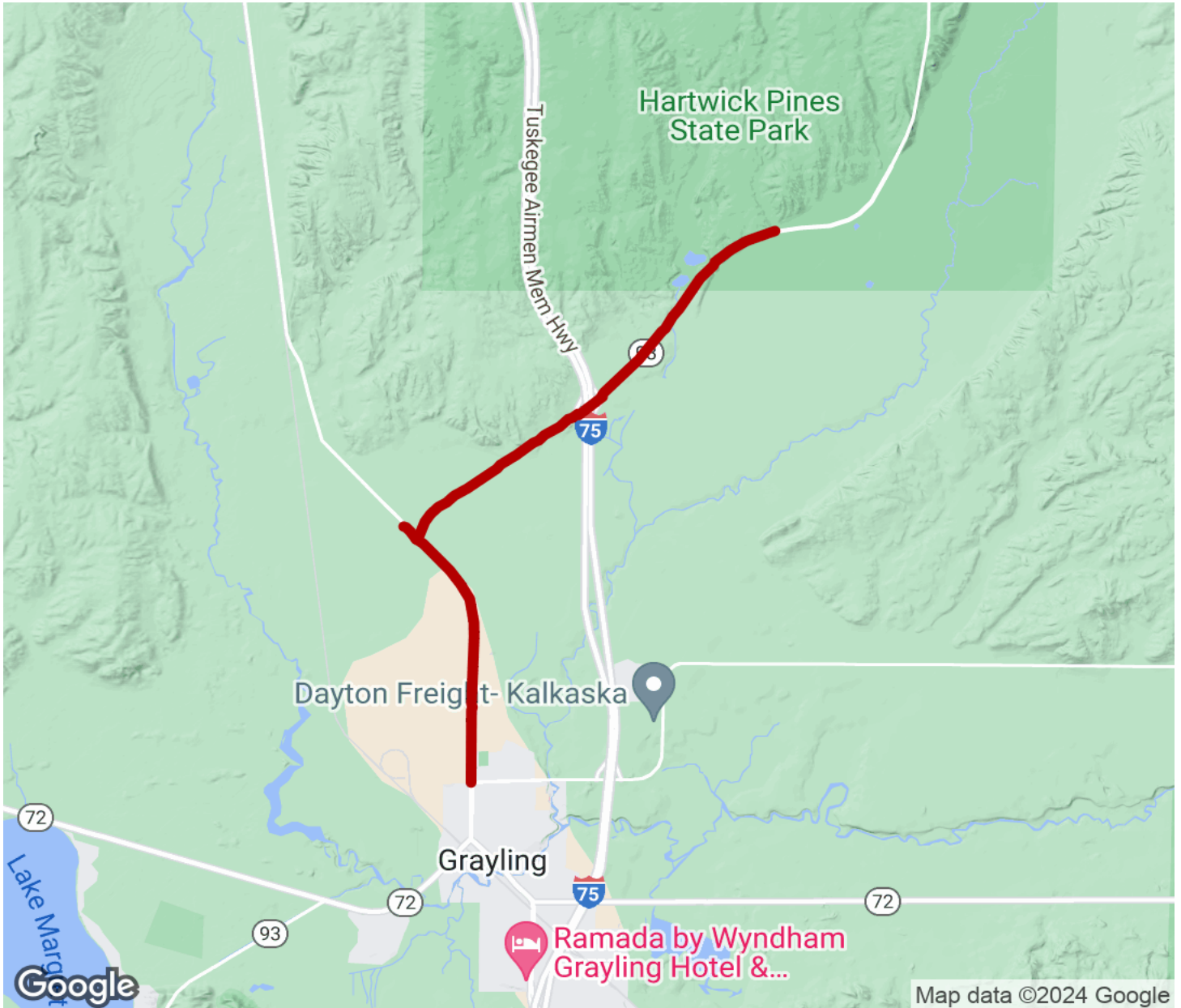
## Parking & Trail Access

Parking for the Grayling Bicycle Turnpike is available near its midpoint at Grayling High School (1135 North Old US 27).



# Grayling Bicycle Turnpike

Michigan



Trailhead



Restroom



Parking



Water Fountain



Tunnel



**TrailLink**  
by Rails-to-Trails Conservancy

**TrailLink.com**