



2024

TrailLink Unlimited 

Guides



## Soo Line Trail (Northern Route)

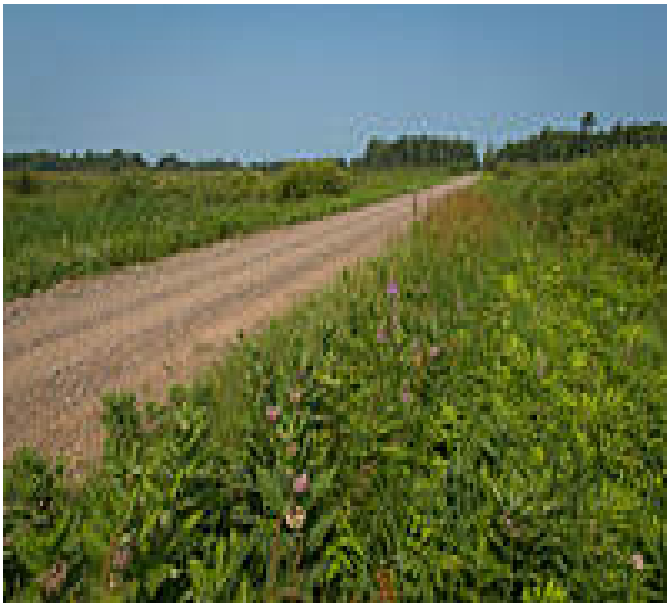
*Minnesota*



# Soo Line Trail (Northern Route)

Minnesota

*Overview Unlike the traditional rail trail, which are often most used by bikers, the Soo Line Trail is primarily an ATV trail and is*



small trail town with less than 1,000 inhabitants, the trail rolls southeast through hardwood forest dotted with small ponds and lakes (hence the state's apt nickname, Land of a Thousand Lakes).

At mile 20, the trail passes between Portage Lake and Leech Lake. At mile 75, the trail passes the Bergland Park Campground, which offers 9 campsites as well as toilets and showers.

Moose Lake anchors the southern end of the trail and is a sizeable town with lodging, dining, shopping and convenience options.

## Connections

The Soo Line North Trail connects with the 114-mile [Soo Line South Trail](#) at Moose Lake.

## Overview

Unlike the traditional rail trail, which are often most used by bikers, the Soo Line Trail is primarily an ATV trail and is composed of a primarily rough dirt and gravel surface.

The trail runs for 113 miles through the rural Northeast of Minnesota, which is regionally home to only to 300,000 people across a 7-county region. Cass Lake, which anchors the northern end of the trail, receives an average of 44 inches of snowfall annually, making snowmobiling a popular winter pastime along this trail.

## About the Route

Starting at the trail's northern endpoint in Cass Lake, a



# Soo Line Trail (Northern Route)

Minnesota

**States:** Minnesota

**Counties:** Aitkin, Carlton, Cass

Length: 113miles

**Trail end points:** US 2 (Cass Lake) to Soo Line Trail - Southern Route (Moose Lake)

**Trail surfaces:** Ballast, Gravel

**Trail category:** Rail-Trail

**Trail activities:** ATV, Horseback

Riding, Mountain

Biking, Snowmobiling, Walking, Cross Country

Skiing

## Parking & Trail Access

The Soo Line Trail runs between the US 2 (Cass Lake) and the Soo Line Trail - Southern Route (Moose Lake).

Parking is available at:

- 45 W Main St (Remer)
- 510 Marconi St (Palisade)

In the winter, there is plowed parking at Moose Lake.

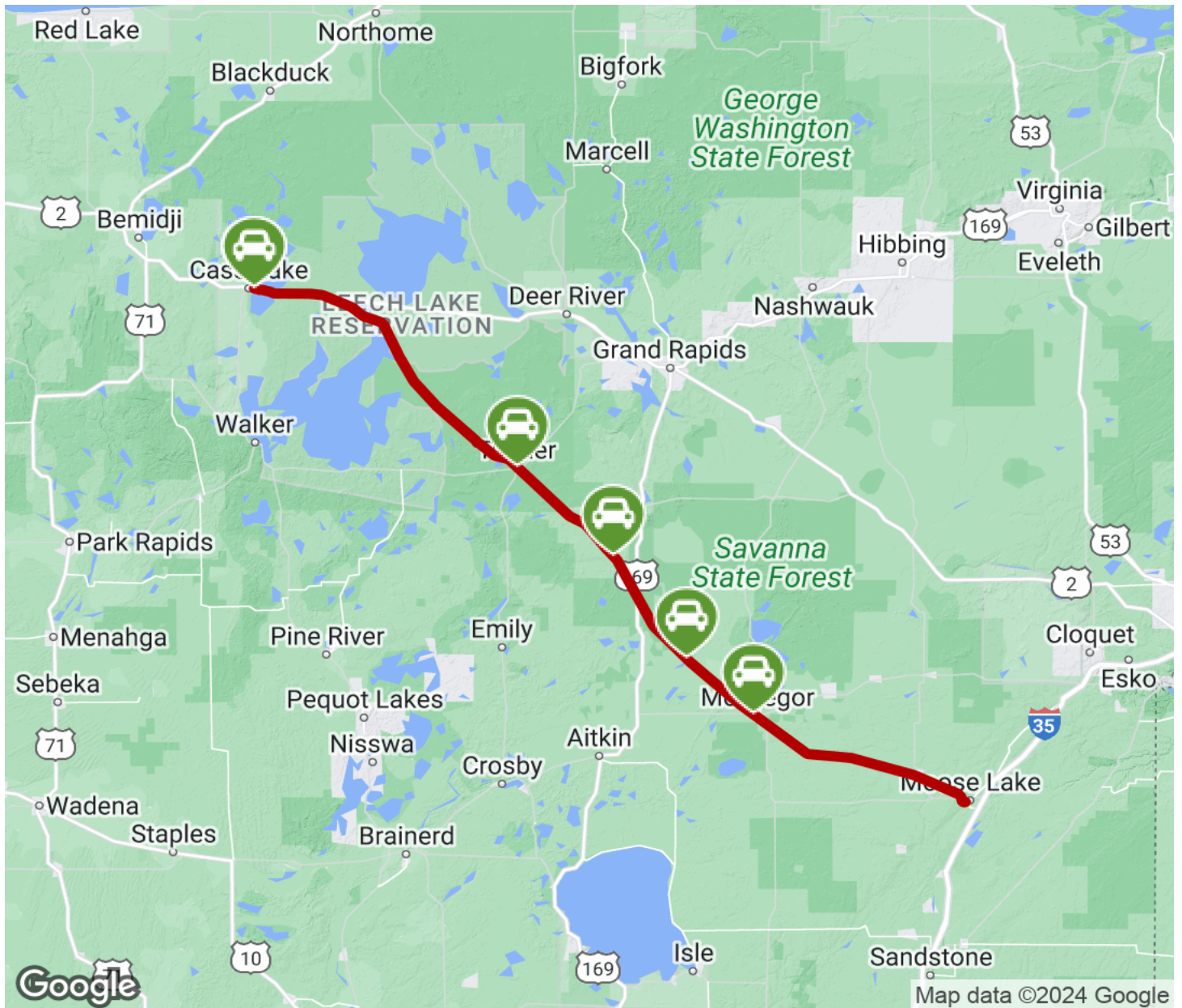
See [TrailLink Map](#) for all parking options and detailed directions.

Note: Non-residents of Minnesota need OHV passes for ATV use along this trail. See more [here](#).



# Soo Line Trail (Northern Route)

Minnesota



Trailhead



Restroom



Parking



Water Fountain



Tunnel



**TrailLink**  
by Rails-to-Trails Conservancy

**TrailLink.com**