



2024

TrailLink Unlimited 

Guides



**Northwest
BeltLine
Connector**
Georgia



Northwest BeltLine Connector

Georgia

The Northwest BeltLine Connector is part of the Atlanta's developing PATH trail network. Together with the Northside Trail,



playground (650 Wesley Dr NW) from the trail.

Bordered by Tanyard Creek and Peachtree Creek for a majority of its route, the trail includes a number of bridges and a covered boardwalk. The trail includes a short segment that meanders Haynes Manor Park and the Northside Trail provides a connection to Tanyard Park (73 28th St NW) and to Ardmore Park.

There are benches and plenty of trail signage. This enjoyable and non-strenuous route is quite popular with locals.

The Northwest BeltLine Connector is part of the Atlanta's developing PATH trail network. Together with the [Northside Trail](#), the connector trail forms a 4-mile route that includes a loop around the golf course in Atlanta Memorial Park (384 Woodward Way NW). The wide, paved pathway is sheltered by trees as it winds through the park and connects multiple recreational opportunities including the Bitsy Grant Tennis Center, the Bobby Jones Golf Course, the Woodward Way Greenspace, and the Northside Beltline park.

On the northwest side of the park, a short spur passes under US 41 and provides an off-road connection between the neighborhood and the rest of the trail. Follow the spur trail under the highway and then very briefly follow Wesley Drive NW to reach the Memorial Park



Northwest BeltLine Connector

Georgia

States: Georgia

Counties: Fulton

Length: 3miles

Trail end points: Northside Dr NW & Manor Ridge Dr NW to Collier Rd, near Overbrook Dr (Atlanta)

Trail surfaces: Asphalt,Boardwalk,Concrete

Trail category: Greenway/Non-RT

Trail activities: Bike,Inline

Skating,Wheelchair Accessible,Walking

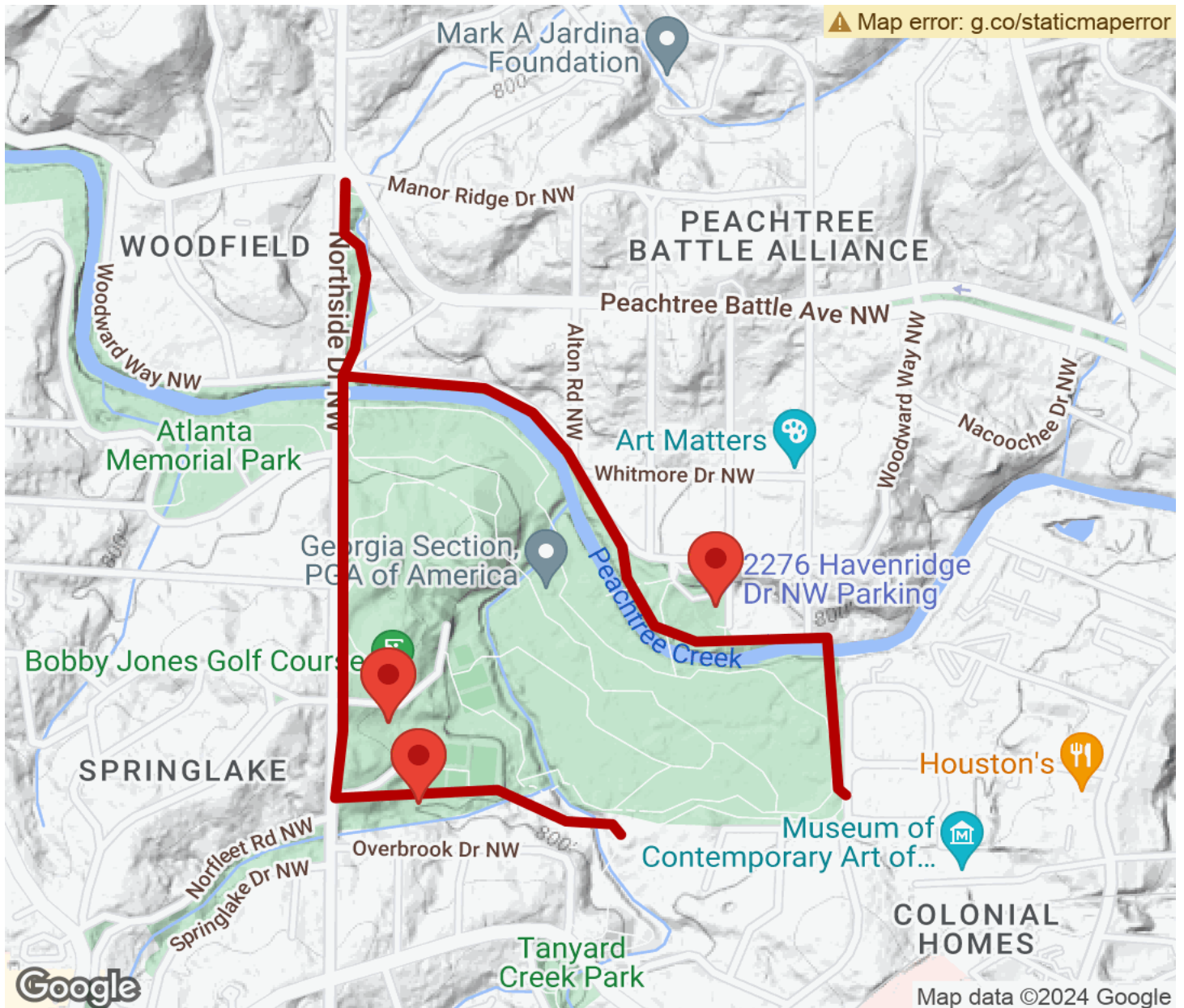
Parking & Trail Access

Parking and trail access is available at multiple locations along the trail including at Bobby Jones Golf Course (2205 Northside Dr NW), at 2276 Havenridge Dr NW, and at the Tanyard Park parking lot (490 Collier Rd NW) which is accessible via the Northside Trail. Visit the [TrailLink map](#) for all options and detailed directions.



Northwest BeltLine Connector

Georgia



Trailhead



Restroom



Parking



Water Fountain



Tunnel



TrailLink
by Rails-to-Trails Conservancy

TrailLink.com