



2024

TrailLink Unlimited



Guides



**Shirley
Heritage Trail**
Indiana



Shirley Heritage Trail

Indiana

The Shirley Heritage Trail provides easy access to recreational opportunities while celebrating the history of the Town of Shirley.



runs on a former Pennsylvania rail corridor.

The Shirley Heritage Trail provides easy access to recreational opportunities while celebrating the history of the Town of Shirley.

At about a mile long, the trail runs east along South Railroad Street from the Jane Ross Reeves Octagon House towards City Park, the town's park located at 200 South St. Looping around the park, the trail continues behind the ball diamonds and around the playground, before heading north up 2nd Street and merging back onto South Railroad Street, where the trail connects back into itself.

The trail is an 8-foot-wide asphalt path, except for a short section on Railroad Street east of First Street painted in red. Benches and panels recounting the town's history are placed periodically along the along the trail, which briefly



Shirley Heritage Trail

Indiana

States: Indiana

Counties: Hancock

Length: 1.1miles

Trail end points: 402 S Railroad St (Shirley) to
City Park at 200 South St (Shirley)

Trail surfaces: Asphalt

Trail category: Rail-Trail

Trail activities: Bike, Walking

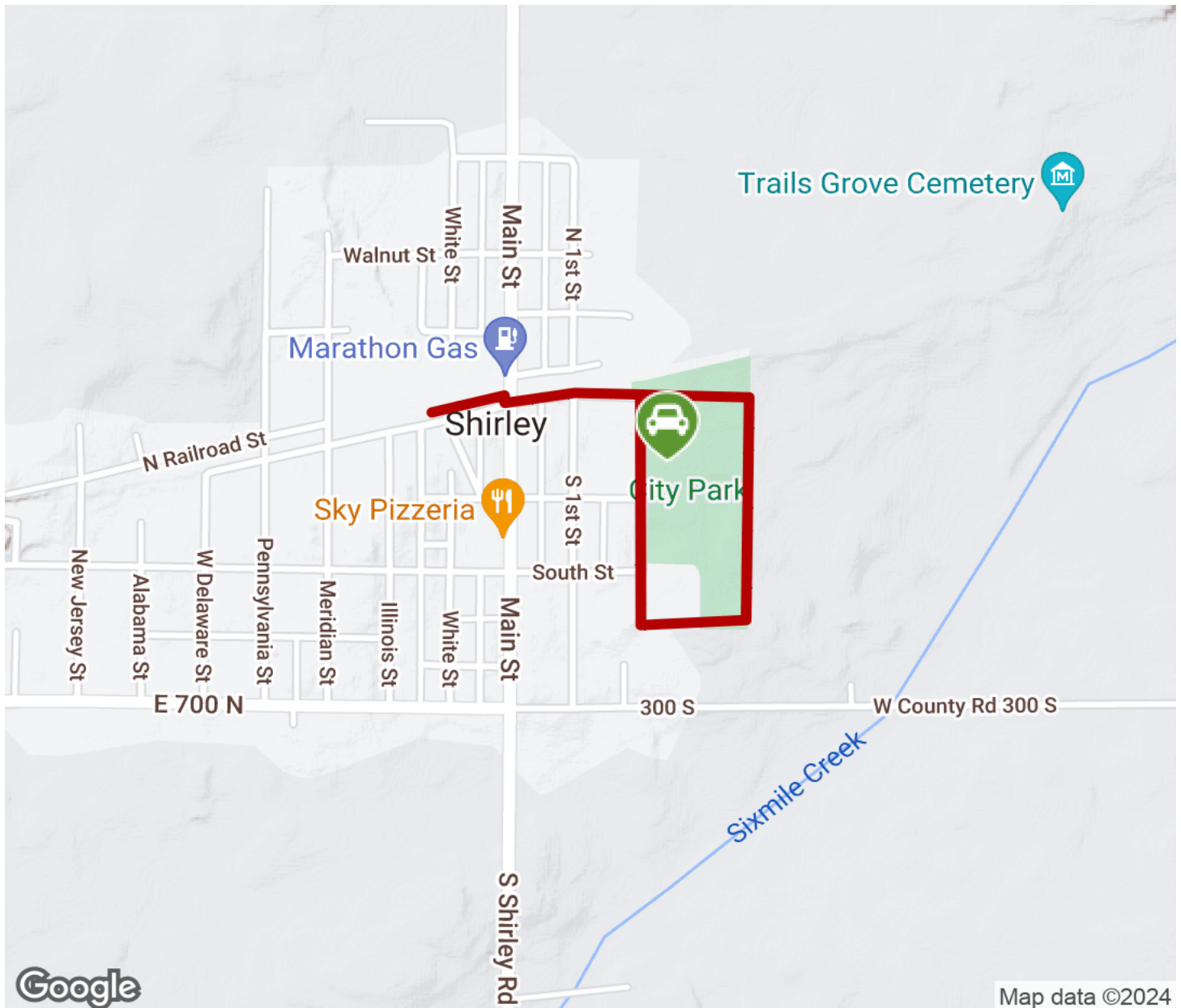
Parking & Trail Access

Parking is available by City Park at 200 South St, Shirley.



Shirley Heritage Trail

Indiana



Trailhead



Restroom



Parking



Water Fountain



Tunnel



TrailLink
by Rails-to-Trails Conservancy

TrailLink.com