



2024

TrailLink Unlimited 

Guides



**Rail Switch  
Nature Trail**  
*North Carolina*



## Rail Switch Nature Trail

North Carolina

*The Rail Switch Nature Trail lies on the edge of the Roanoke River. The trail is located a stone's throw from downtown but it plunges*



The Rail Switch Nature Trail lies on the edge of the Roanoke River. The trail is located a stone's throw from downtown but it plunges users into an immersive natural escape. Beginning at the edge of the Port'o Plymouth Museum on Water Street, the trail follows a former railroad corridor into the riverfront woods and marshes. Boardwalks and observation areas provide a vantage point from which to observe the resident wildlife. Birds abound, including waterfowl and songbirds. The trail comes to an end on Main Street, and users can retrace their steps back to the starting point at the museum.



# Rail Switch Nature Trail

*North Carolina*

**States:** North Carolina

**Counties:** Washington

Length: 0.3miles

**Trail end points:** Water Street to Main Street

**Trail surfaces:** Boardwalk,Dirt,Grass

**Trail category:** Rail-Trail

**Trail activities:** Walking

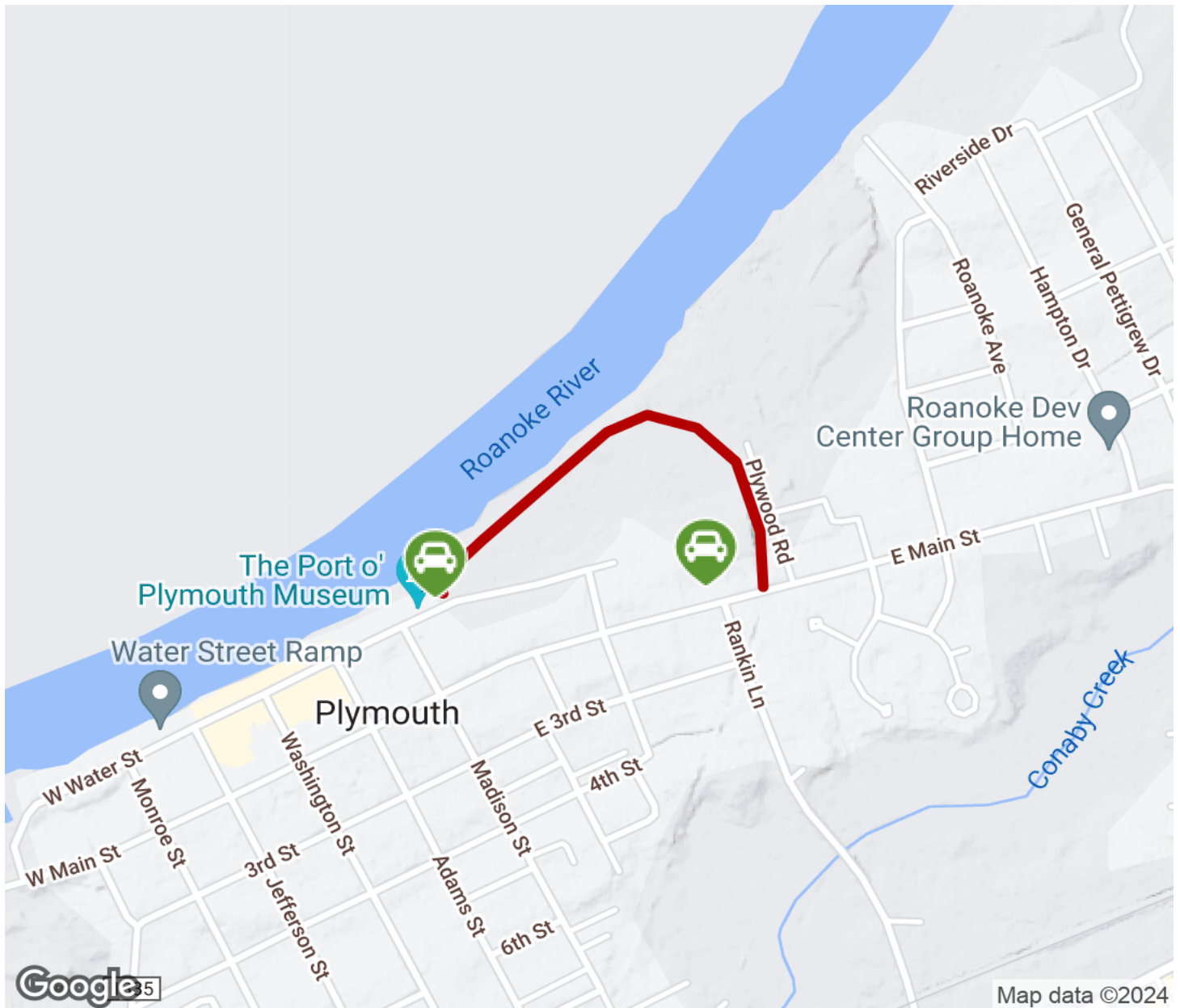
## Parking & Trail Access

Park at the Port'o Plymouth Museum (302 E Water St, Plymouth).



# Rail Switch Nature Trail

North Carolina



Trailhead



Restroom



Parking



Water Fountain



Tunnel



**TrailLink**  
by Rails-to-Trails Conservancy

**TrailLink.com**