



2024

TrailLink Unlimited



Guides



**Ridge View  
Manor Trail**  
*Minnesota*



## Ridge View Manor Trail

Minnesota

*The Ridge View Manor Trail is a short trail that branches off from the Douglas State Trail, connecting the popular recreation pathway*



The Ridge View Manor Trail is a short trail that branches off from the [Douglas State Trail](#), connecting the popular recreation pathway with growing suburban developments in northwestern Rochester. The path leads from 65th Street in the north, through the playgrounds and open space of Ridge View Manor Park, past a series of ponds and the connection with the Douglas State Trail, down to Harvest Lake Drive in the south, just a short distance away from a local elementary school. Providing a safe neighborhood route to school and a convenient way to access a crucial part of the area trail network, the Ridge View Manor Trail is the type of asset that every neighborhood would love to have.



# Ridge View Manor Trail

Minnesota

**States:** Minnesota

**Counties:** Olmsted

Length: 1miles

**Trail end points:** Harvest Lake Dr. NW to 65th  
St. NW

**Trail surfaces:** Asphalt

**Trail category:** Greenway/Non-RT

**Trail activities:** Bike, Inline Skating, Walking

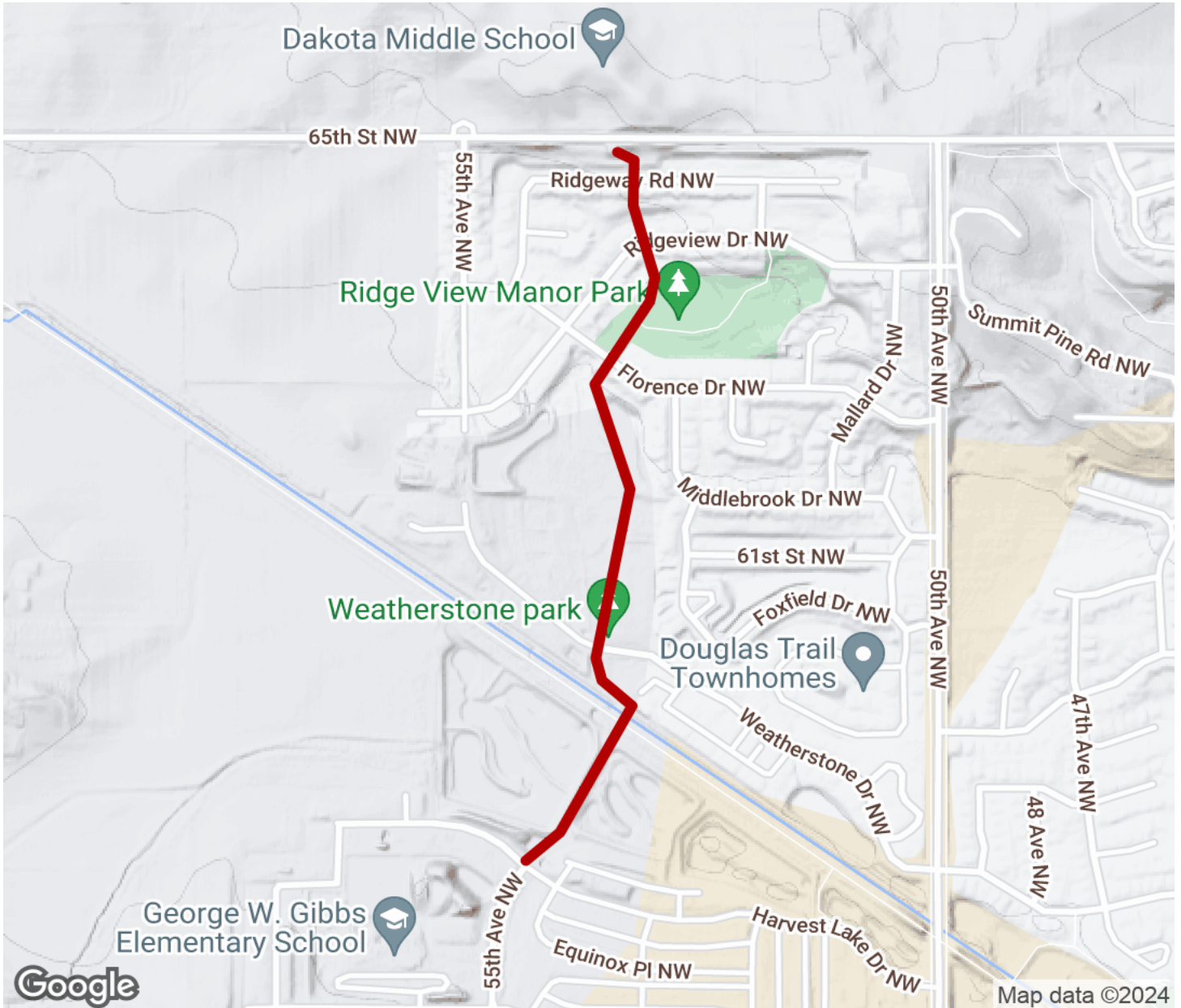
## Parking & Trail Access

On-street parking is available along the trail; be sure to follow any posted parking signs and regulations.



# Ridge View Manor Trail

Minnesota



Trailhead



Restroom



Parking



Water Fountain



Tunnel



**TrailLink**  
by Rails-to-Trails Conservancy

**TrailLink.com**