



2024

TrailLink Unlimited 

Guides



**John King  
Trail**  
*Iowa*



## John King Trail

Iowa

*The John King Trail runs along a former railroad corridor in Albia, Iowa. From 3rd Ave E to Benton Ave, the trail runs parallel to an*



The John King Trail runs along a former railroad corridor in Albia, Iowa. From 3rd Ave E to Benton Ave, the trail runs parallel to an active railroad line. Cruizin' Albia Park, which has a playground and baseball diamond, is next to the trail. The rest of the trail goes through a residential neighborhood. There are plans to extend the John King Trail and build new trails connecting it to other city facilities.



# John King Trail

Iowa

**States:** Iowa

**Counties:** Monroe

Length: 0.5miles

**Trail end points:** 3rd Ave E and S 7th St to C  
Ave E and N 12th St

**Trail surfaces:** Asphalt

**Trail category:** Rail-Trail

**Trail activities:** Bike, Wheelchair Accessible

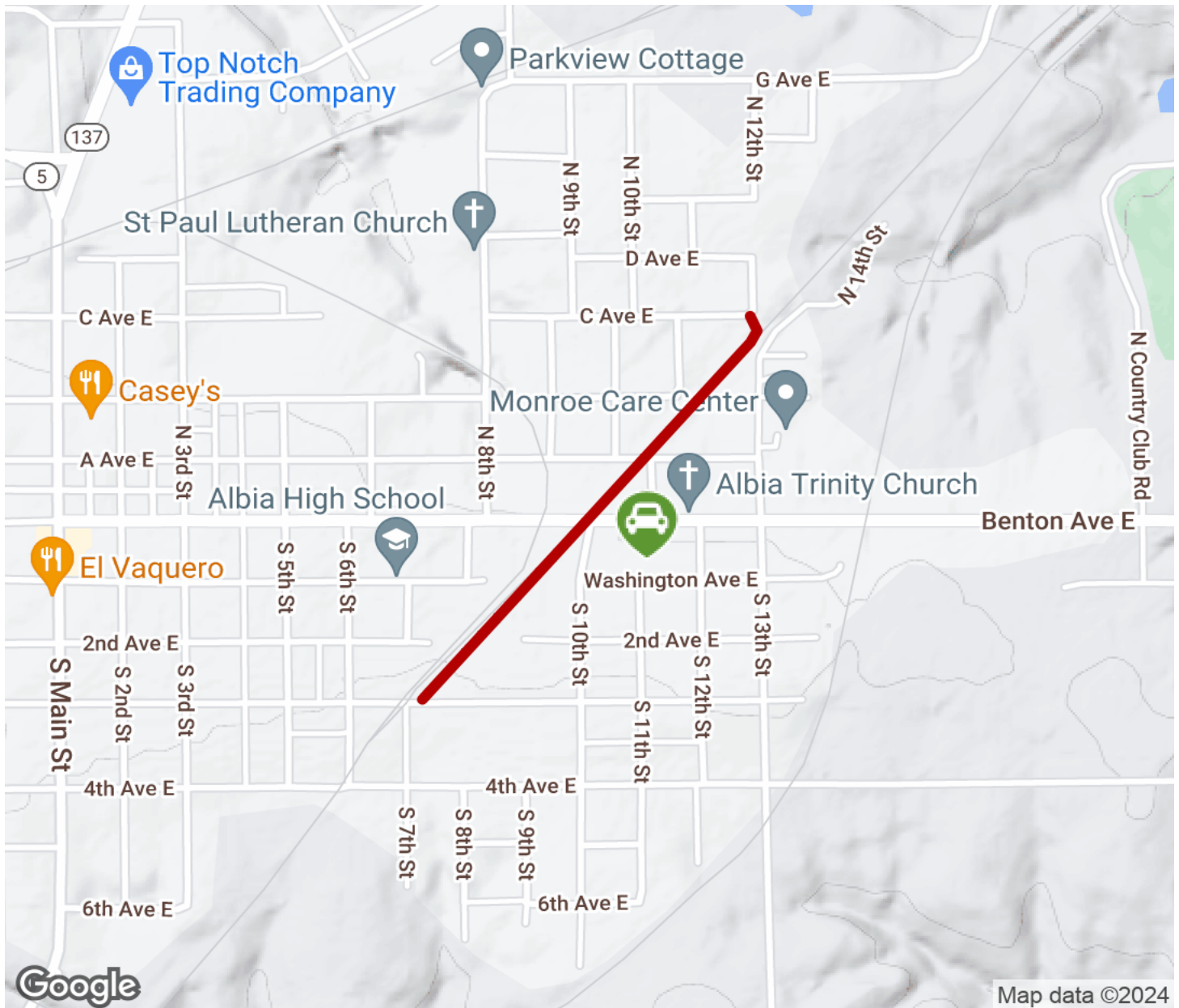
## Parking & Trail Access

Parking is available at Cruizin' Albia Park (Washington Ave E and S 11th St).



# John King Trail

Iowa



Trailhead



Restroom



Parking



Water Fountain



Tunnel



**TrailLink**  
by Rails-to-Trails Conservancy

**TrailLink.com**