



2024

TrailLink Unlimited



Guides



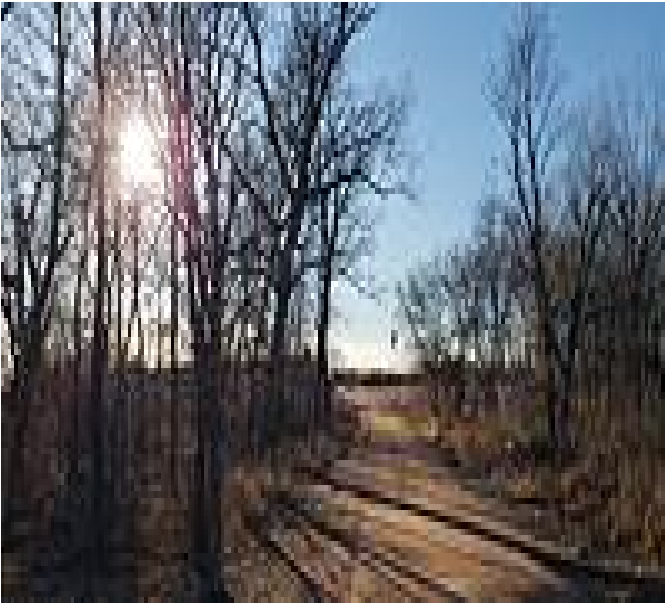
**Lakefront
Trail**
Texas



Lakefront Trail

Texas

At nearly 4 miles, the Lakefront trail connects Beard Park to McCord Park via scenic lakeshore route. The trail is a combination



At nearly 4 miles, the Lakefront trail connects Beard Park to McCord Park via scenic lakeshore route. The trail is a combination of crushed granite and boardwalk over wetlands. It was officially opened in the Fall of 2017 in Little Elm, an extended suburb of Dallas, Texas. The trail is a combination of crushed gravel and boardwalk, drawing walkers, joggers and mountain bikers alike. There are access points to the water for those wishing to fish as well.



Lakefront Trail

Texas

States: Texas

Counties: Denton

Length: 4miles

Trail end points: Beard Park to McCord Park

Trail surfaces: Boardwalk, Concrete, Crushed Stone

Trail category: Greenway/Non-RT

Trail activities: Bike, Horseback Riding, Mountain Biking, Walking

Parking & Trail Access

The trail has four trail heads:

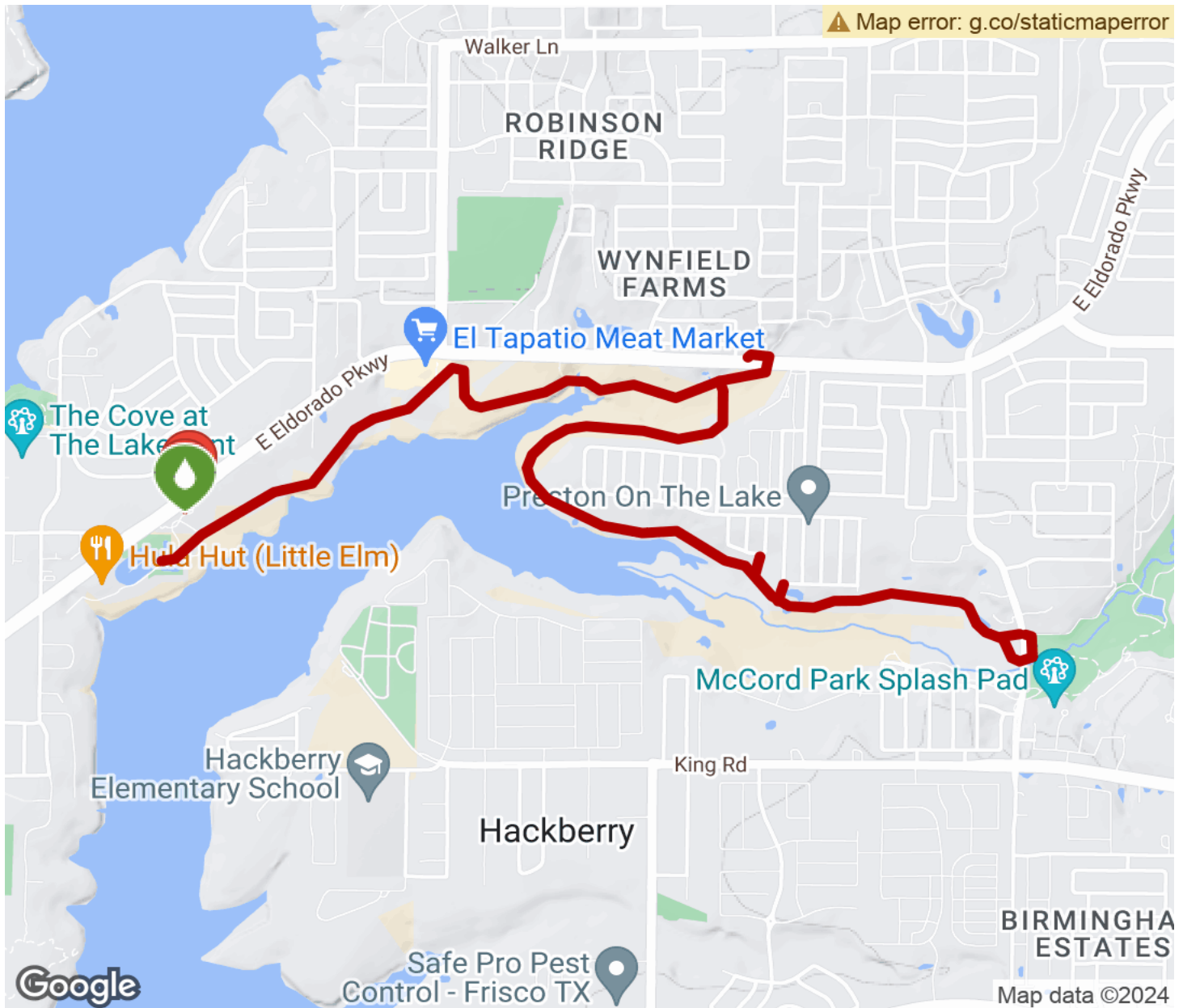
- Hula Hut restaurant, southwest of Beard Park
- Beard Park (310 E. Eldorado Parkway)
- Harts Road & El Dorado Parkway
- McCord Park (2050 FM423)

The two parks provide a number of amenities, including parking. Beard Park offers restrooms, a pavilion and a tree-themed playground. McCord Park has picnic tables, a playground, passive green space and an 18-hole disc golf course. Hula hut trailhead parking is the lot east of Hula Hut and not the actual restaurant lot.



Lakefront Trail

Texas



Trailhead



Restroom



Parking



Water Fountain



Tunnel



TrailLink
by Rails-to-Trails Conservancy

TrailLink.com