



2024

TrailLink Unlimited



Guides



**KR Trail  
(Route of the  
Badger)**  
*Wisconsin*



## KR Trail (Route of the Badger)

Wisconsin

*The KR Trail is a new addition to Kenosha County's growing bike-ped network. The trail picks up where the Kenosha Pike Bike Trail*



The KR Trail is a new addition to Kenosha County's growing bike-ped network. The trail picks up where the [Kenosha Pike Bike Trail](#) leaves off, in Petrifying Springs Park. From the northwest corner of the park, the trail launches with winding boardwalk over Pike River. The surface then transitions to asphalt for the rest of its 1.5-mile route parallel to Green Bay Road (Highway 31). Near the end, the trail crosses the highway and begins to parallel Highway KR up to its terminal point at 56th Avenue. Signalized crossings help path users get safely across the roads.

In the future, the KR Trail will link to the Pike River Pathway.



# KR Trail (Route of the Badger)

Wisconsin

**States:** Wisconsin

**Counties:** Kenosha

Length: 1.5miles

**Trail end points:** Petrifying Springs Park at 7th Street to Highway KR

**Trail surfaces:** Asphalt, Boardwalk

**Trail category:** Greenway/Non-RT

**Trail activities:** Bike, Inline Skating, Wheelchair Accessible, Walking

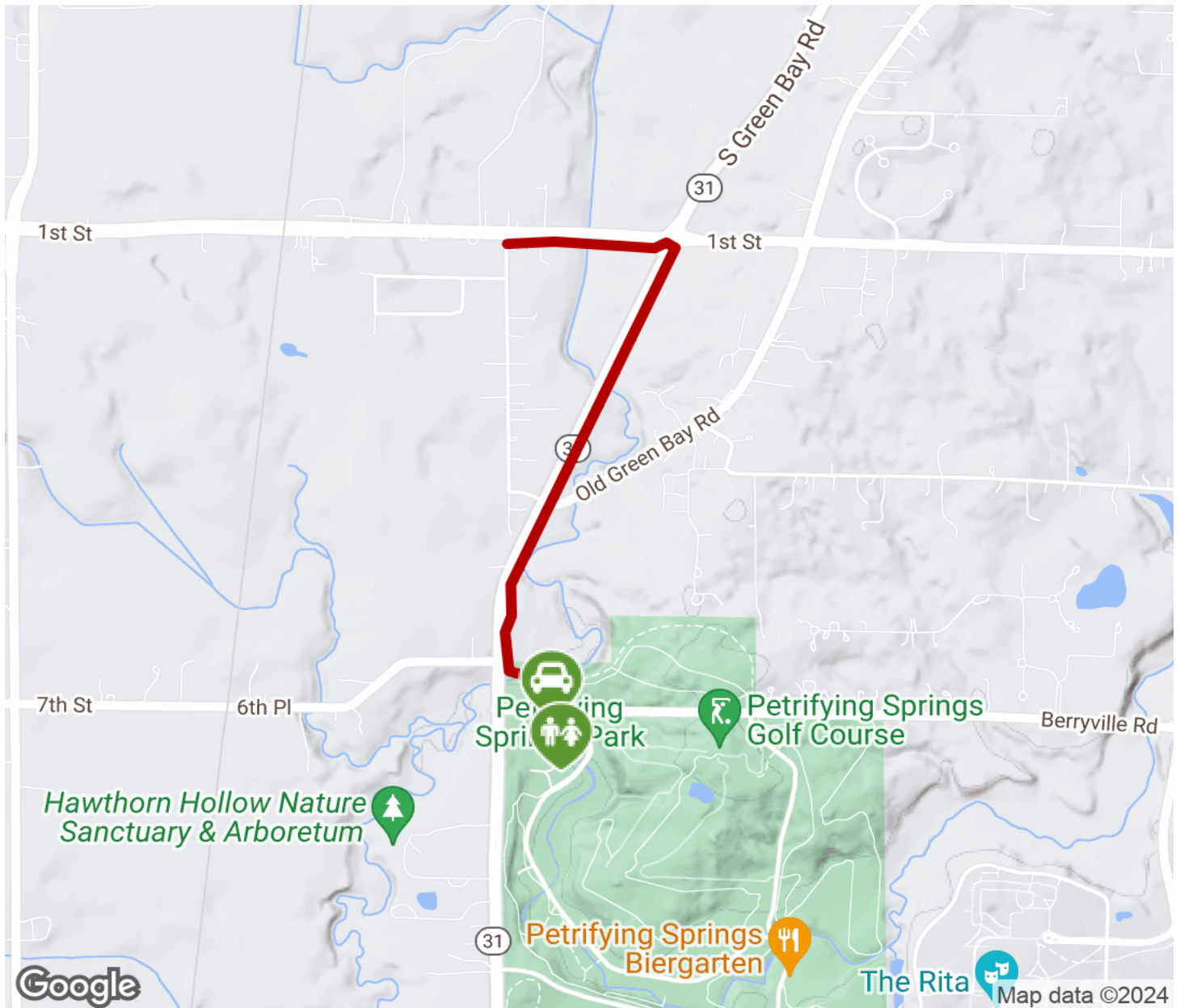
## Parking & Trail Access

Park at Petrifying Springs Park 5555 7th Street, Kenosha.



# KR Trail (Route of the Badger)

Wisconsin



Trailhead



Restroom



Parking



Water Fountain



Tunnel



**TrailLink**  
by Rails-to-Trails Conservancy

**TrailLink.com**